



Take right steps to equity investments through **Elite Explore**



INDEX

SLIDE 2

SLIDE 3

SLIDE 4

SLIDE 5

SLIDE 6

SLIDE 7

SLIDE 8

SLIDE 9

SLIDE 10

SLIDE 11

SLIDE 12

SLIDE 13

How to Login

How to Create Market Watch

How to Transfer Funds

How to Withdraw Funds

How to Check Funds

How to Create Order Preference

How to Place Order

How to Place Stop Loss

How to Apply IPO

How to Check Net Position

How to Check Portfolio

How to Access Backoffice Report

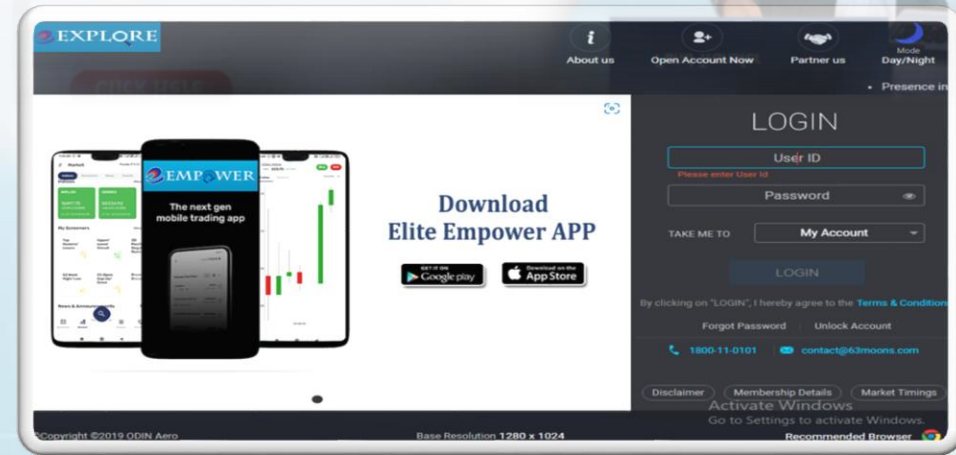
HOW TO LOGIN

- TO VISIT OUR WEBSITE www.elitewealth.in
- Navigate to the login page and click "Online Trading".
- Enter your User ID(Trading Code) in the designated field.
- Input your password in the provided space.
- Double-check for accuracy and ensure caps lock is appropriately set.
- Click the "Login" button to access your account.

* If you are trying to login for the first time, you need to reset the password by clicking on "Forgot Password" option.

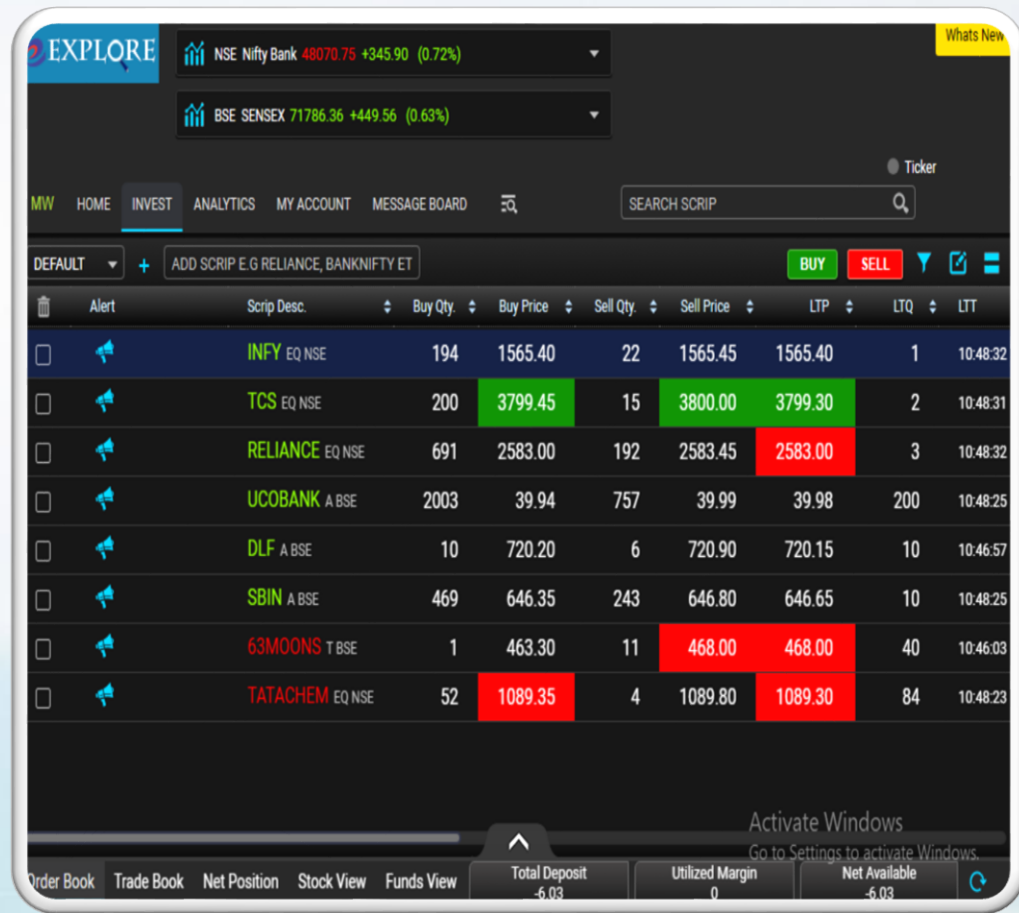
* Enter OTP

* Enter new password of your choice.



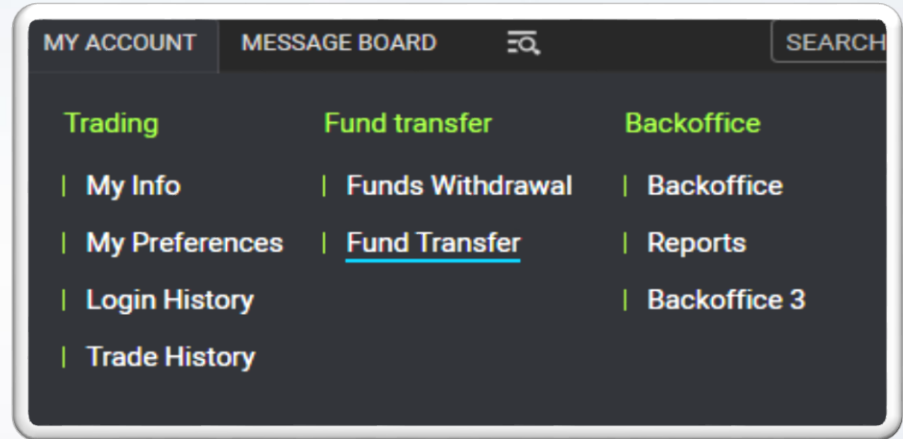
HOW TO CREATE MARKET WATCH

- Navigate to the market/trading section.
- Look for the "+" or "Add" button within the interface.
- Click on the "+" button to initiate the process.
- Put any name you want to add in your profile with "Add New Profile".
- Enter the details or code of the script you want to add to your watchlist.
- Confirm the addition, and the script will be added to your watchlist.
- Access your watchlist to monitor the performance of the added script in real-time on the market.



HOW TO TRANSFER FUNDS

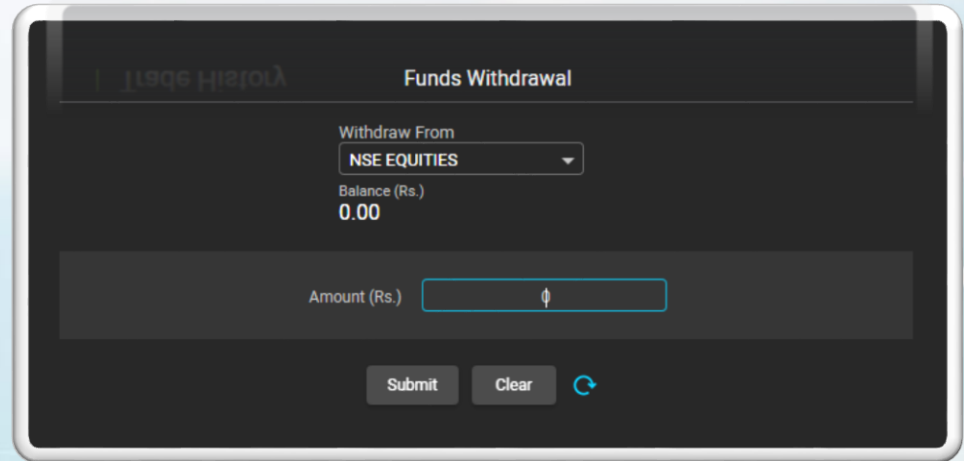
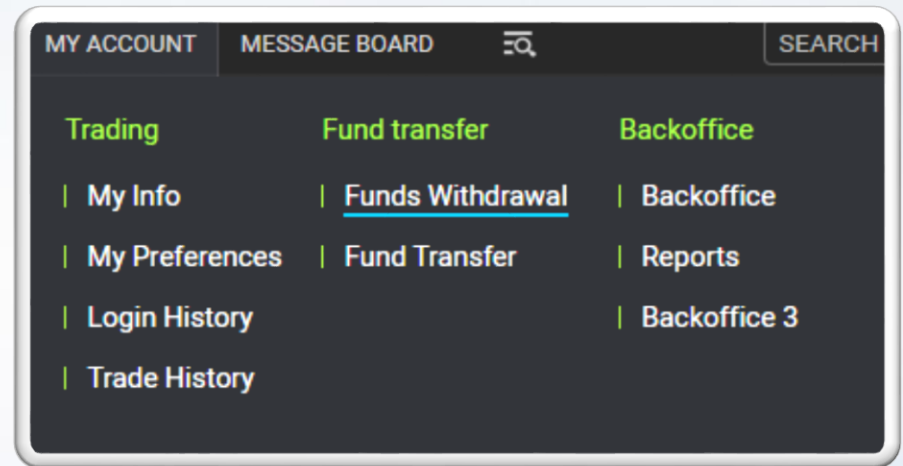
- Navigate to the "Fund Transfer" section. Redirect to Fund Transfer Page:
 - Upon selecting "Fund Transfer," you will be redirected to the net banking of your registered bank
- Viewing Account Details:
 - On the fund transfer page, you can find your account details.
 - This includes essential information such as account number, bank, etc.
- Proceeding with Fund Transfer:
 - Once on the fund transfer page, locate the option to add funds.
 - Enter the desired amount you want to transfer.
 - Follow the on-screen prompts to complete the fund transfer.



A screenshot of the 'Funds Transfer' form. The form is titled 'Funds Transfer' and has a section for 'Net Banking'. It includes a 'Product' dropdown menu set to 'NSE EQUITIES' and a 'Bank' dropdown menu set to 'Select Bank'. Below these, there is an 'Amount' input field with '0.00' entered. A 'Note' section states: 'You will be redirected to the Banks website. It might take a few seconds.' and includes a link for 'Available Banks'. At the bottom, there are 'Submit' and 'Clear' buttons. A warning message at the bottom reads: 'Please do not refresh a Page or click on Back or Close button of your browser.'

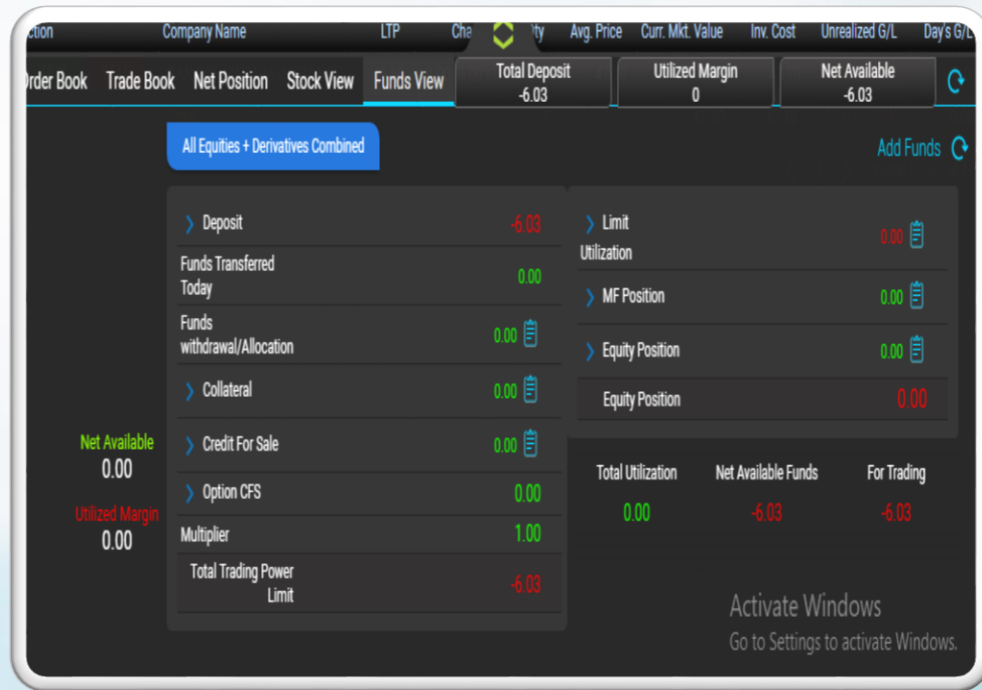
HOW TO WITHDRAW FUNDS

- Accessing Funds Withdrawal:
 - Navigate to the "Fund Transfer" section.
- Selecting Funds Withdrawal:
 - Within the fund transfer options, choose "Funds Withdrawal."
- Viewing Account Balance:
 - The withdrawal page will display your current account balance.
- Withdrawing Funds:
 - Based on your available balance, enter the amount you wish to withdraw at your registered bank in your trading account.



HOW TO CHECK FUNDS

- Navigate to the "Funds View" section, typically located below or within the platform interface.
- Access a comprehensive overview of all your funds and financial information.
- Review details such as account balances, available funds, and fund transactions.
- Check your Trading power limit after collateral benefits.



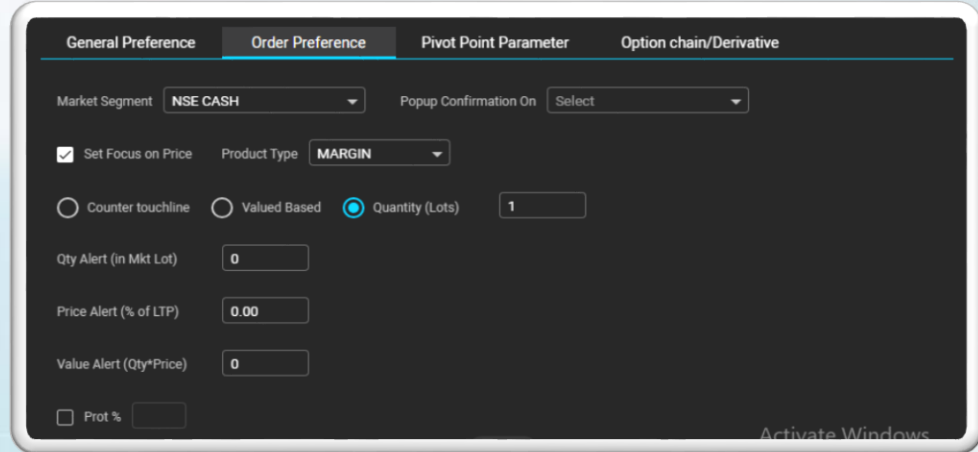
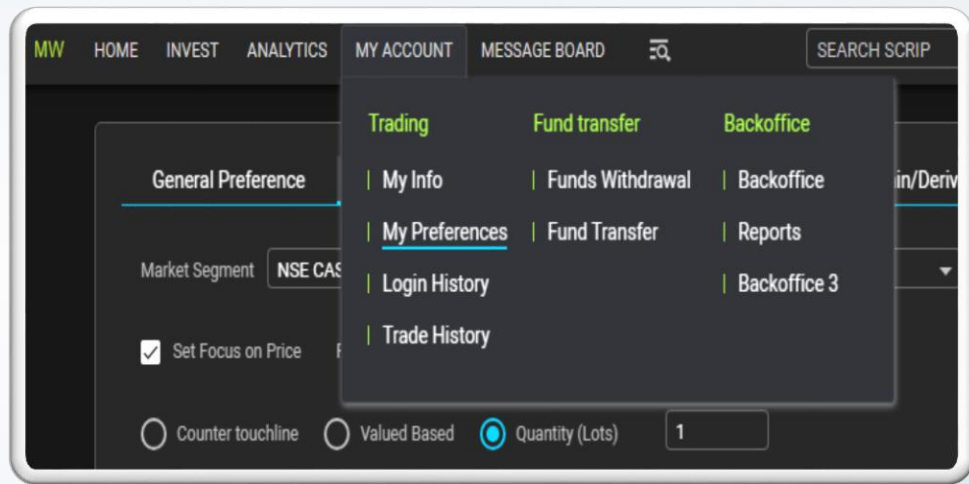
HOW TO CREATE ORDER PREFERENCE

- Upon logging in, navigate to the "My Account" section.
- Select "My Preferences" to customize your trading settings.
- Click on "Order Preference" within the preferences menu.
- Tailor your choices according to your trading preferences and strategies.
- Consider adjusting settings such as order types, time-in-force, and other relevant parameters.

* Select Product type Margin/ Delivery

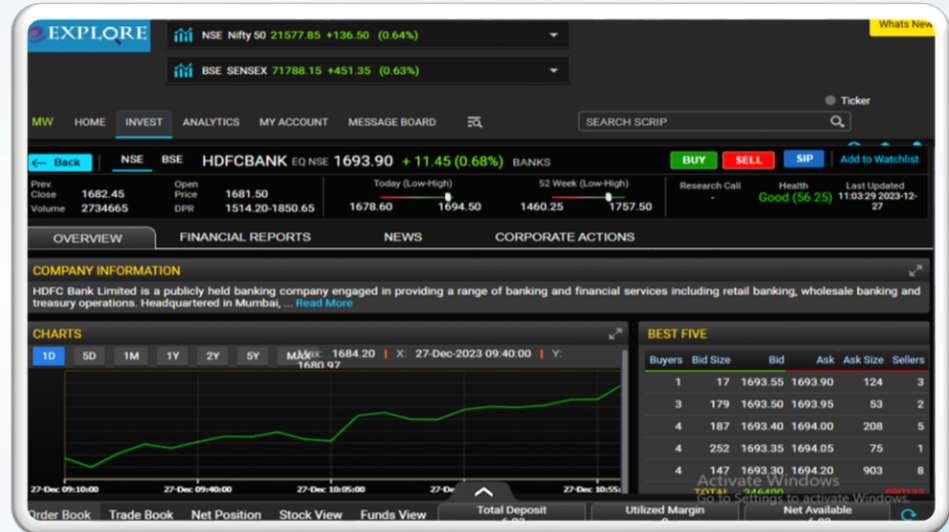
In Product Type Delivery, investors buy and hold stocks for a more extended period..

In Product Type Margin, trading is focused on short-term price movements within the same trading day. Orders placed in margin will be auto squared off at 3:15 PM.



HOW TO PLACE ORDER

- Select the desired share from your watchlist.
- Choose from the available options: Buy and Sell.
- Select RL(Normal) as your order type.
- Specify the quantity of shares you want to buy or sell.
- If applicable, set additional parameters for order types like price limits.
- Click "Place Order" to execute the transaction.



Order Entry

NSE BSE HDFCBANK EQ NSE 1694.05 +11.60 (+0.69%) Change Scrip We Recommend - BUY SELL

DELIVERY MARGIN BRACKET ORDER

Order Type Quantity Price

RL 1 1694.20

(Lot Size=1) (1514.20-1850.65)

Show advanced

-6.03 Available Margin 338.84 Approx. Margin

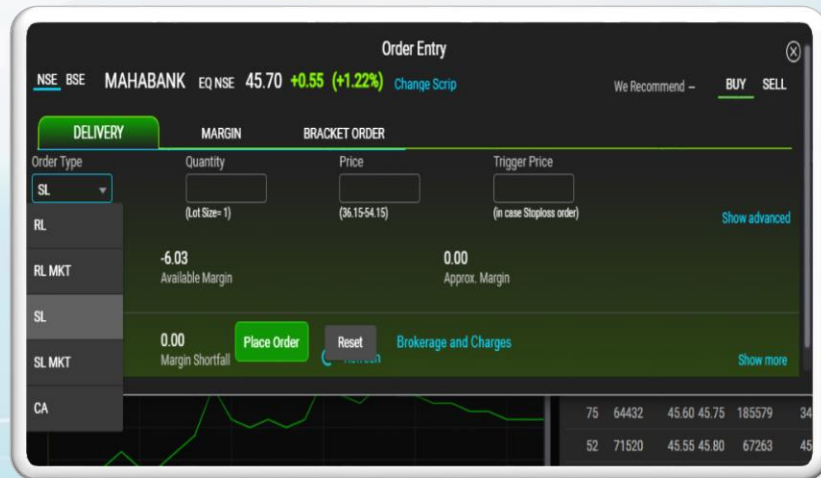
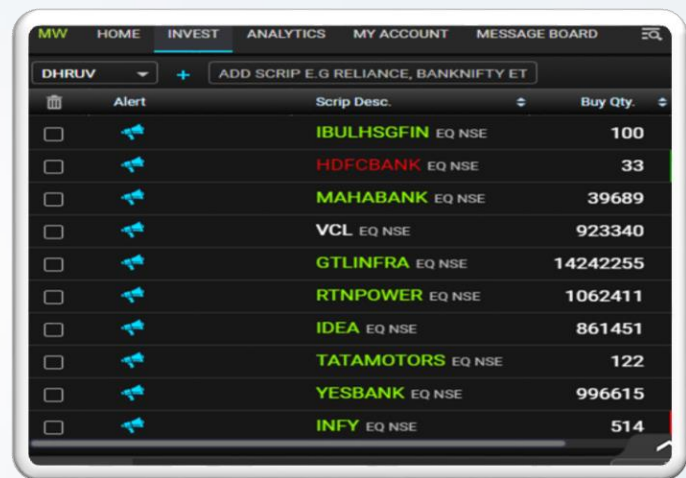
344.87 Margin Shortfall Place Order Reset Brokerage and Charges Show more

HOW TO PLACE STOP LOSS

- Select Share:
 - Choose the specific share you want to buy/sell from your desired watchlist in Market Watch.
- Order Type:
 - Select "SL" (Stop Loss) as the order type.
- Set Loss Limit:
 - In the price section, define the maximum acceptable loss you are willing to incur.
- Bracket Price (Trigger Price):
 - Set a trigger price to act as a bracket, ensuring that the stop loss order is activated if the stock reaches a certain level.
- Place Order:
 - Click on "Place Order" to execute the stop loss order.

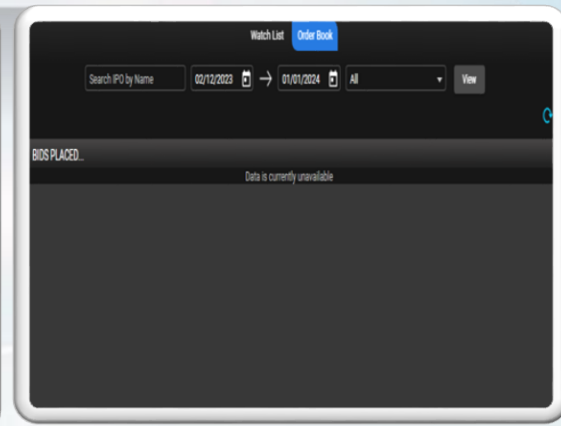
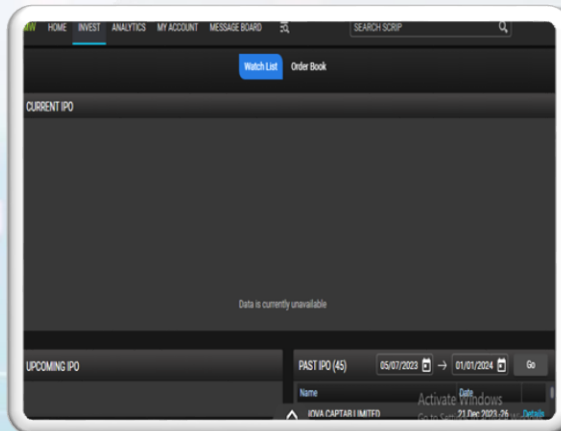
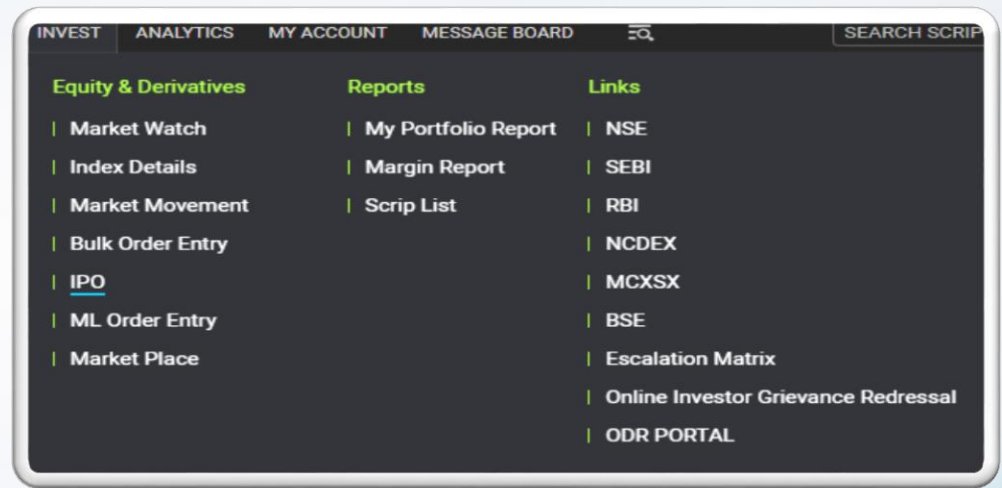
* If you are buying a share then you need to set trigger price lower than your set price so that it could hit trigger price before set price.

* If you are selling a share then you need to set trigger price higher than your set price so that it could hit trigger price before set price.



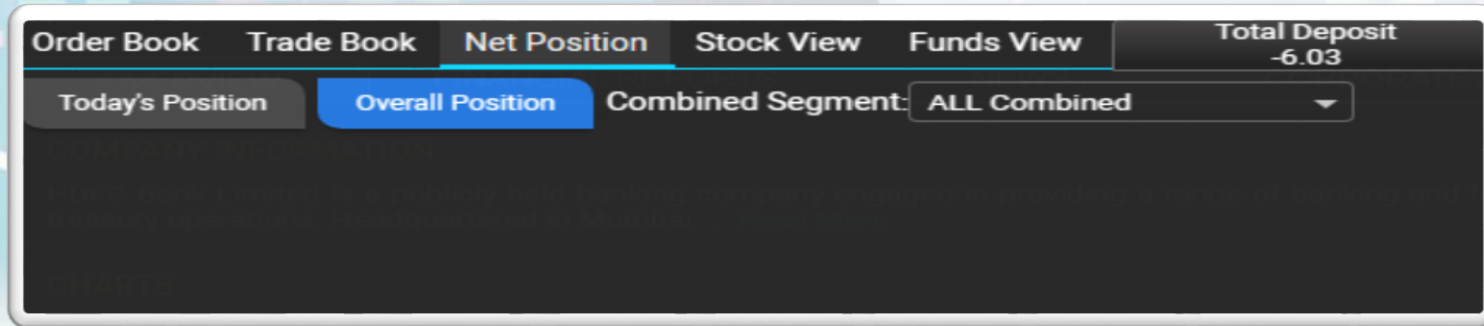
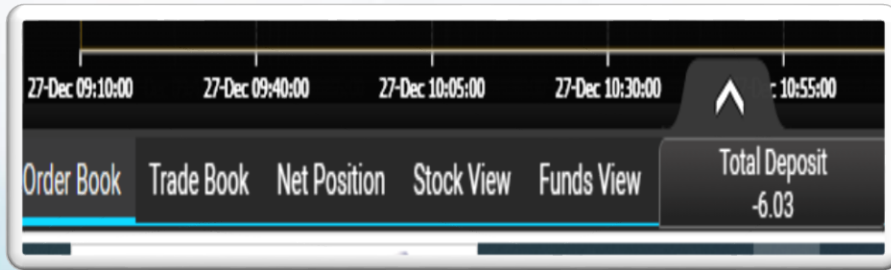
HOW TO APPLY IPO

- Navigate to Invest Section:
 - Access the Invest section on the platform.
- IPO Section:
 - Locate and select the IPO option.
- View Past IPOs:
 - Explore a list of past Initial Public Offerings (IPOs).
- Upcoming IPOs:
 - Access information about upcoming IPOs.
- On Order Book:
 - Find the order book section for applying to available IPOs.
- Apply to IPO:
 - Utilize the order book to submit applications for the desired IPOs.



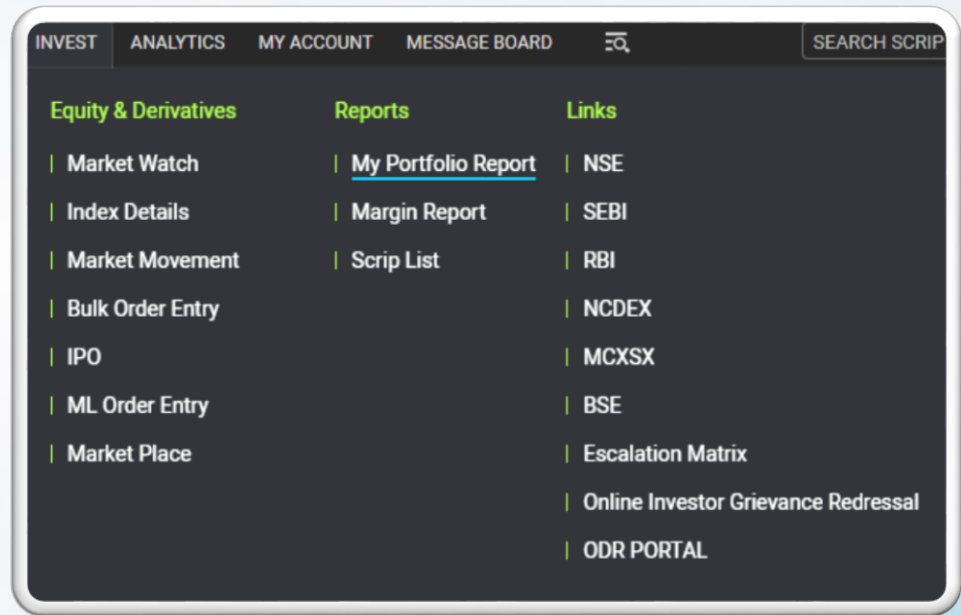
HOW TO CHECK NET POSITION

- Locate the options menu, which may include Order Book, Trade Book, Net Position, and Funds View.
- Choose "Net Position" to review your overall trading position.
- Explore different viewing options based on your preference:
 - EQ Combined (Equity Combined)
 - Dev Combined (Derivative Combined)
 - All Combined (Combined view of all positions)
- Analyze your net positions for a comprehensive understanding of your trading portfolio.
- Check Today's Position for real-time insights into daily performance.



HOW TO CHECK PORTFOLIO

- Navigate to the "Invest" section on the platform.
- In the Reports menu, select "My Portfolio Report."
- Explore different sections within the portfolio report, including:
 - Holdings: Review your current portfolio positions.
 - Today's Holding: View holdings for the current trading day.
 - Combined: Get an overview of all holdings combined.
- Analyze details such as stock names, quantities, and market values.
- Use the report to track the performance of your investments over time.
- Adjust your portfolio strategy based on the insights gained.

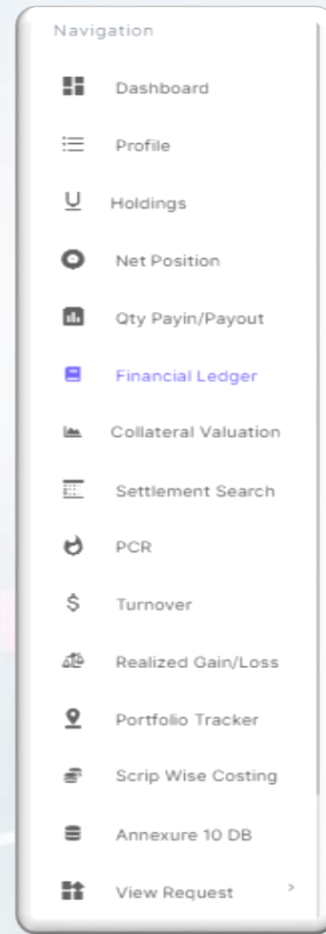
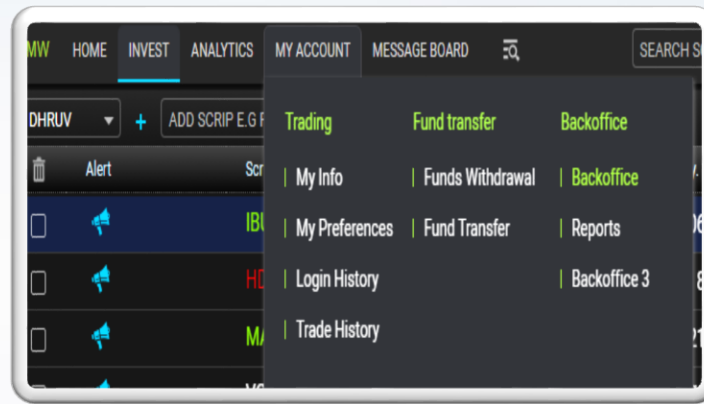


A screenshot of the 'My Portfolio Report' table. The table has tabs for 'Holdings', 'Today's', and 'Combined'. The table columns are: Action, Company Name, LTP, Change, Qty, Avg. Price, Curr. Mkt. Value, Inv. Cost, Unrealized G/L, and Day's G/L. The table shows one holding for 'BANK OF MAHARASHTRA NSE' with a quantity of 1, an average price of 47.10, a current market value of 45.50, and an unrealized loss of -1.60 (-3.40%).

Action	Company Name	LTP	Change	Qty	Avg. Price	Curr. Mkt. Value	Inv. Cost	Unrealized G/L	Day's G/L
BUY	BANK OF MAHARASHTRA NSE	45.50	0.00 (0.00%)	1	47.10	45.50	47.10	-1.60 (-3.40%)	0.00
Total				1		45.50	47.10	-1.60 (-3.40%)	0.00

Showing Page 1 of 1

HOW TO ACCESS BACKOFFICE REPORT



- Navigate to the "My Account" section.
- Backoffice Menu:
 - In the menu, locate and select the "Backoffice" option.
- Backoffice Overview:
 - Upon selection, you'll be redirected to the Backoffice, a hub for various functionalities.
- Options Available:
 - Explore several options within the Backoffice:
 - Profile: Manage and update personal information.
 - Holdings: View and track your current investment holdings.
 - Financial Ledger: Access details of financial transactions and balances.
 - Billing: Review billing information and statements.
 - Report: Generate and analyze reports related to your trading activities.
 - Request: Initiate specific requests or actions.



Dear Investor for Trade related queries please call us @01142445858. For our services please write us customercare@elitewealth.in.

